

Klemsan



NEW



KLEA 4 SERIES ENERGY ANALYZERS

- 4.2 inch Ghost Screen, 45 mm Depth
- 4 mm² Current Inputs
- RS485 (Modbus RTU) Option
- 2 SPST Relay Output Options
- 2 Digital Input/Output Options

KLEA 5 SERIES ENERGY ANALYZERS

- 4.2 inch LCD Screen, 45 mm Depth
- 4mm² Current Inputs
- 2 Digital Input/Output Options
- RS485 (Modbus RTU) Option
- Ethernet (Modbus TCP) Option
- 2 SPST Relay Output Options



MED4/EMD4 SERIES 3-PHASE ENERGY METERS

- Direct Connection up to 100A
- MID Approval Option
- RS485 (Modbus RTU) Option
- 2 Digital Output Options
- 2 Digital Input Options

MED/EMD SERIES ENERGY METERS

- MID Approval Option
- Direct Connection up to 45A and 80A
- High Measurement Accuracy
- RS485 (Modbus RTU) Option
- 2 Digital Output Options
- 4 Sub-tariffs with Real-Time Clock



POWYS SERIES ENERGY ANALYZER

- Screenless, 7 segment, and LCD Options
- 72mm and 126mm Enclosure Width
- RS485 (Modbus RTU) Option
- 2 SPST Relay Output Options
- 2 Digital Input/Output Options

Klemsan

NEW

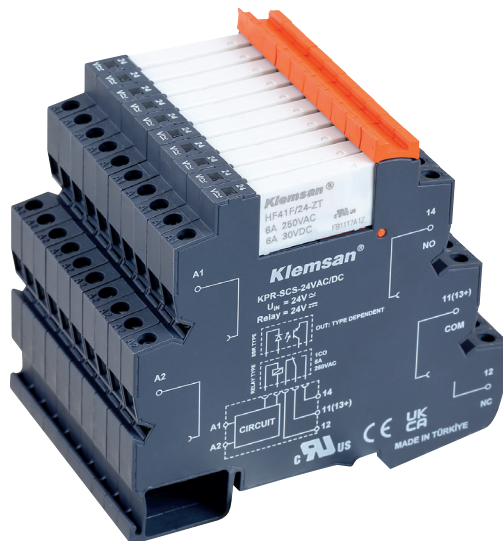


ECRAS SERIES MULTIMETERS

- 4.2 inch Ghost Screen, 45 mm Depth
- 4 mm² Current Inputs
- RS485 (Modbus RTU) Option
- 2 SPST Relay Output Options

PLC INTERFACE RELAY SERIES

- Input voltage options between 6V and 230V,
- DC and AC supply voltage options,
- Electromechanical and SSR support in the same enclosure
- 6A switching current under 250V AC,
- Space saving with 6.2mm design,
- Special filter design that is not affected by voltage leaks
- UL certification



TIME RELAYS SERIES

- 12-240 V AC/DC universal supply range
- 18 mm enclosure design under DIN
- Support for up to 10 functions based on model
- 0.1sec – 10 days wide time range
- Power-off delay function adjustable for up to 2 hours
- Function control via trigger input
- UL certification



PROTECTION & MONITORING RELAYS SERIES

- System errors can be monitored thanks to the LED notifications that indicate errors.
- 18 mm enclosure design
- TRMS measurement,
- Optionally Asymmetry, Phase Sequence, Absence of Phase, High - Low Voltage, High - Low Frequency, PTC, Neutral break protection,
- Liquid level and light intensity monitoring functions
- Star, delta, and single-phase connection options,
- UL certification



MGS SERIES AUTOMATIC TRANSFER RELAY

- DIN standard compliant 72mm body design
- Low voltage, phase loss, and optional phase sequence protection
- Bidirectional transition times are adjustable up to 100 msec
- 3 pcs 16A relays: mains contactor output, generator contactor output, and generator start output

NEW



KUES SERIES ETHERNET SWITCH

- 5 and 8 port 10/100 Base-TX options
- 10/100 Base-TX
- Operating Temperature Range of -40°C to 75°C
- Durable Aluminum Casing

KLEMSAN POWER SUPPLIES



AC/DC Converter KPS-30

30W, AC/DC DIN-Rail Power Supply

- Universal 85-264VAC or 120-370VDC input voltage
- Operating ambient temperature range -40°C to +70°C
- High I/O isolation voltage up to 4000VAC
- OVC III (EN61558-1 standards)
- Output short circuit, over-current, over-voltage protection
- Withstand 300VAC surge input for 5s



AC/DC Converter KPS-120

120W, AC/DC 120W Enclosed Switching Power Supply

- Universal 90 - 264VAC or 127 - 370VDC Input voltage
- Operating ambient temperature range: -20°C to +60°C
- High I/O isolation test voltage up to 4000VAC
- Ultra slim design: suitable for small chassis and narrow space installation



AC/DC Converter KPS-60

60W, AC/DC DIN-Rail Power Supply

- Universal 85-264VAC or 120-370VDC input voltage
- Operating ambient temperature range: -40°C to +70°C
- High I/O isolation test voltage up to 4000VAC
- OVC III (EN61558-1 standards)
- Output short circuit, over-current, over-voltage protection
- Withstand 300VAC surge input for 5s



AC/DC Converter KPS-150

150W, AC/DC DIN-Rail Power Supply

- Universal 85-264VAC (277VAC available) or 120-370VDC (390VDC available) input voltage
- Withstand 300VAC surge input for 5s
- Operating ambient temperature range: -30°C to +70°C (can be start-up at -40°C)
- High I/O isolation test voltage up to 4000VAC (Input - output)
- Ultra-thin design: width 105mm (6SU)



AC/DC Converter KPS-75

75W, AC/DC 75W Enclosed Switching Power Supply

- Universal 90 - 264VAC or 120 - 370VDC Input voltage
- Operating ambient temperature range: -30°C to +70°C
- High I/O isolation test voltage up to 4000VAC
- Suitable for small chassis and narrow space installation



AC/DC Converter KPS-240-P

240W, AC/DC 240W Enclosed Switching Power Supply

- Universal 85 - 264VAC or 120 - 370VDC Input voltage
- Operating ambient temperature range: -40°C to +70°C
- DC OK function
- Built-in active PFC function
- 150% peak load output for 3 seconds
- LED indicator for power on
- Operating altitude up to 5000m
- OVC II
- Indoor use



AC/DC Converter KPS-120-P

120W, AC/DC 120W Enclosed Switching Power Supply

- Universal 85 - 264VAC or 120 - 370 VDC Input voltage
- Operating ambient temperature range: -40°C to +70°C
- DC OK function
- Active PFC
- 150% peak load output for 3 seconds
- DC ON output status indicator LED
- OVCII
- Indoor use



AC/DC Converter KPS-480-P

480W, AC/DC 480W Din Rail Power Supply

- Universal 85 - 264VAC or 120 - 370VDC Input voltage
- Operating ambient temperature range: -40 C to +70
- High I/O isolation test voltage up to 3000VAC
- DC OK function
- Active PFC, PF > 0.99
- Ultra slim design with 48mm width
- Withstand 305VAC input voltage 5S

NEW



FAST, SAFE and EASY

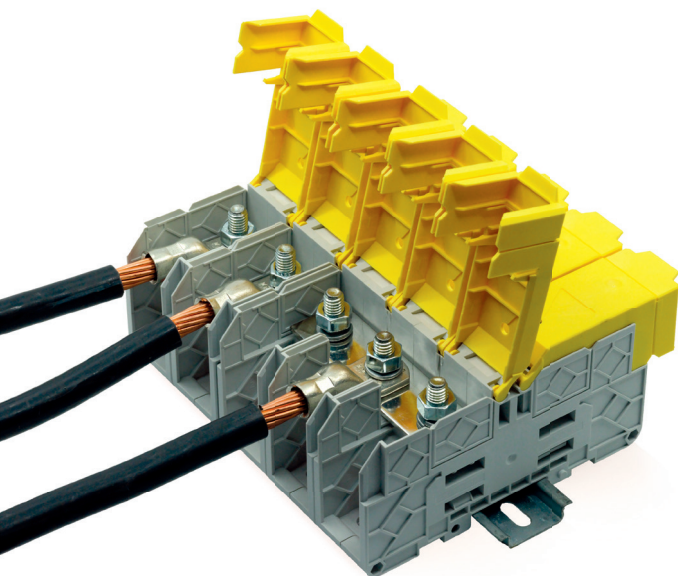
PRD SERIES PUSH-IN TYPE TERMINALS

- Wire connection in the cross-section range of 1 - 16 mm²
- Easy connection without hand-tool
- Easy disassembly thanks to orange push buttons
- Suitable for usage with or without ferrules
- Flammability class is V0
- Suitable for vibration places and under heavy conditions

FAST, SAFE and EASY

MPB SERIES LEVER WIRE CONNECTORS

- Wire cross-section : 4 mm²
- Versions : 2,3 and 5 poles
- Time saving with push-in connection
- Quick installation with lever enclosure
- Easy adjustable wire stripping length

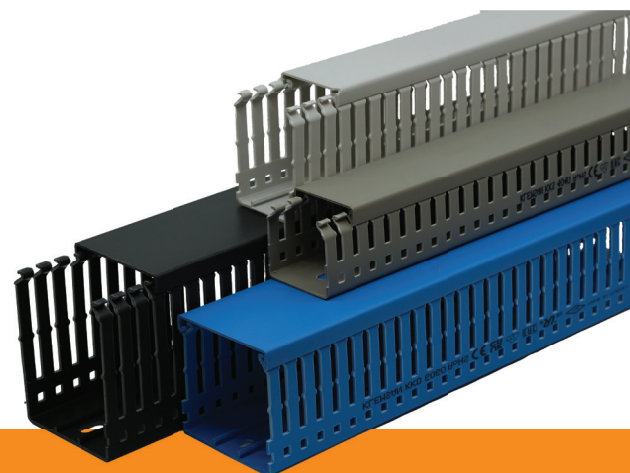


PAK SERIES HIGH CURRENT TERMINALS

- High current carrying capacity and secure connection
- Fulfill Railway EN45545-2 Standard
- HL1 - HL2 - HL3 R22 - R23 - R24 - R26 Safety classes
- Cable connection in the cross section range of 25 - 300 mm²
- Fully insulated with insulation cover and body structure
- Suitable for cable lugs of different standards
- UL94 compliant, V0 flammability class

PVC WIRING DUCT-KKD SERIES

- Flame-retardant, self-extinguishing according to UL94-V0
- Upper scorline is available for breaking off the ribs.
- Lower scorline is available.
- Operating Temperature: -5°C to 60°C
- Standard Length: 2 meters
- Complies with RoHS regulations.
- Complies with IEC 60695-2-1 and EN 50085-2-3 standards.





50
Years

more than
100
Countries